

# C40-55s

IC-PNEUMATIC

LPG/DIESEL

4000 / 4500 / 5000 / 5500 kg at 500mm L/C

8000 / 9000 / 10000 / 11000 lbs. at 24" L/C

GEN2



**CLARK**®

**THE FORKLIFT**



• Low effort **hydrostatic power steering** provides the operator with excellent maneuverability and ease of control.

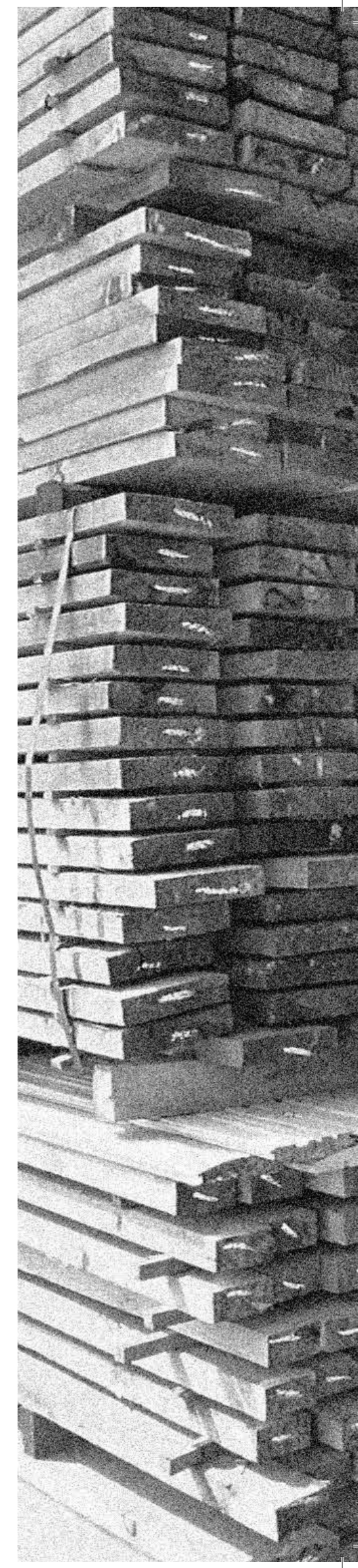
• Low, open foot step with **traction plate** makes entry/exit quick, easy and safe.

# 98%

Engineered for extreme environments, the C40-55s is equipped with a two-stage air filter system that removes 98% of incoming dust and debris before it enters the filter media.

• Nested upright rails provide positive rail interlock and a narrow profile to **maximize the vision window**. The overhead guard safety bars run parallel to the operator's line of sight resulting in a **clear, unobstructed view**.

Maximum Visibility + Minimum Fatigue =  
**Ultimate Safety & Maximum productivity**



**Rugged Durability and High Performance in Demanding Applications**  
The GEN2 C40-55s is designed to tackle any task placed in its path. The open-core, plate-fin radiator provides **maximum cooling of the engine, transmission and axle in the harshest environments** and the most demanding applications.

# C40-55s STANDARD FEATURES & BENEFITS



## PARKING BRAKE

- **Simple & Error Proof**
  - Hand operated lever actuates brake.
  - Transmission disengages when parking brake is set preventing driving against park brake.

## WET DISC BRAKES ON ALL C40-55S MODELS

- **Enclosed & Oil Cooled**
  - For smooth, quiet operation.
  - Minimal wear promotes long life.
  - Reduced maintenance means less downtime.
- **Power Assist Design**
  - Low pedal effort reduces operator fatigue.



## RUGGED CONSTRUCTION

### UPRIGHT AND CARRIAGE

- **I-Beam style upright**
  - Rails are designed to be 55% stronger than conventional flat-faced rails.
  - Better resistance to side-to-side deflection.
  - Promotes longer life and improved stability with elevated loads.
- **Hydraulic Cushioning Valves**
  - Silent staging reduces shock & vibration.
- **Shimmable, Sealed & Canted Load Rollers**
  - Carriage has 6 load rollers & 4 side thrust rollers.
  - Maximize load distribution and reduce free play.

### STEERING AXLE

- Roller king-pin bearings are tapered and greasable to exclude dirt and extend service-life.
- Linkage pivot pins are double shear design to withstand impact without loosening or breaking.

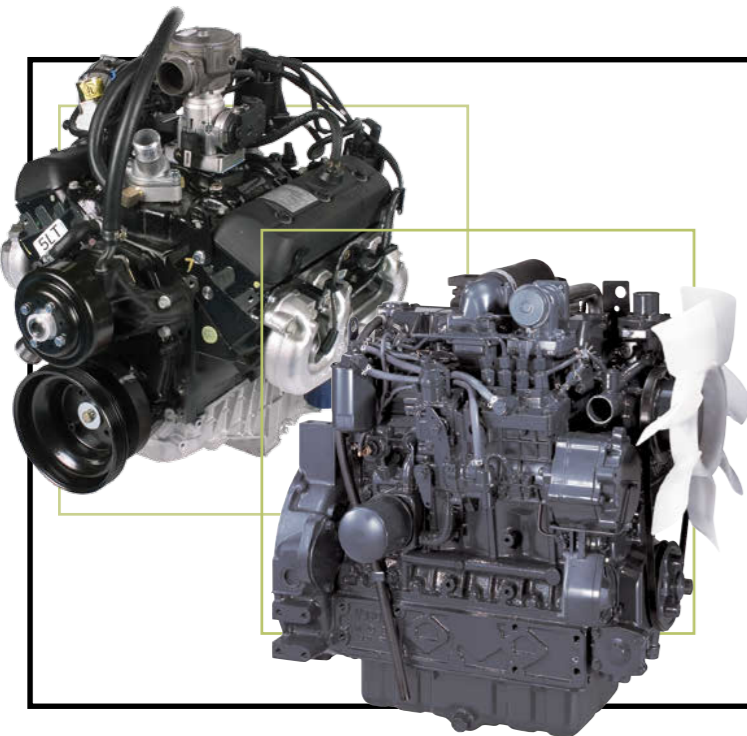
### ONE-PIECE FRAME

- Heavy duty, welded, and formed steel plate design protects from impact damage and extends the life of the truck.



## OPERATOR COMPARTMENT

- **CLARK Safety Seat**
  - 15 cm / 6" fore / aft adjustment.
  - Molded for support.
  - Retractable seat belt.
  - Weight adjustment and full-suspension available.
- **Operator Presence Sensing System (Optional)**
  - Hydraulic and transmission functions disengage when operator leaves seat.
- **Thick Molded Floor Mat**
  - Reduces vibration and noise level.
  - Improves operator comfort.
- **Hood Mounted Hydraulic Controls**
  - Located and sized for ease of use.
- **Low cowl design**
  - Greatly increases visibility of forks and load.
- **Tilt Steering Column**
  - Adjusts to suit operator & provides easier entry/exit.

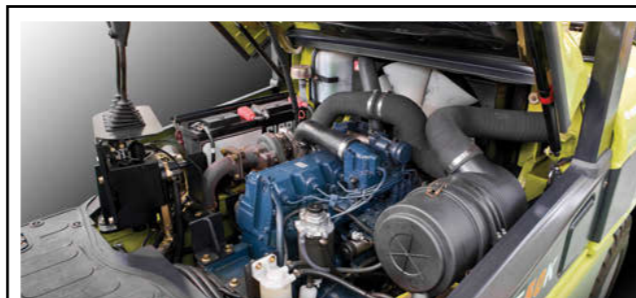


## THE POWER BEHIND THE PUNCH

- **Field-Proven 4.3 L V-6 GM LPG Engine**
  - Provides smooth, quiet operation.
  - Optional LPG tier 4 version complete with 3 way muffler.
- **3.8 L Direct injection turbocharged Diesel Engine**
  - 92 hp provides exceptional output and high torque.
  - Water-cooled, 4-cycle diesel.
- **Auto Shut-Down**
  - Protects your investment in the event of low engine oil pressure, excessive engine coolant or high transmission oil temperatures.
- **CE Compliant**
  - Engines meet reduced emission and smoke levels.

## Optional Equipment

- Double auxiliary valve
- Hose adaptations
- Side shifters
- Strobe lights
- Full Cabin with Heater or air-conditioning (only for diesel engine)
- Rear work light
- Audio system
- Varius seat option
- Various tire options
- Different Fork Positioner



## EASE OF MAINTENANCE

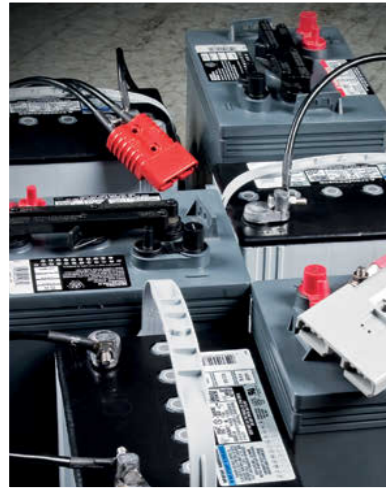
- **Service Access is Simple**
  - Seat Deck raises for easy access to both sides of engine and floorboard is removable revealing hydraulic & transmission components.

## HYDRAULIC SYSTEM

- **Maximum Horsepower**
  - Uses a load-sensing flow control valve for steering to reduce horsepower loss and heat buildup.
- **Optimum Performance Of Attachments**
  - The main hydraulic valve incorporates adjustable flow controls for tilt and auxiliary functions.
- **Sectional Design**
  - Allows for easy addition of extra functions and simplifies service.
- **Upright Mounted Load Lowering Valve**
  - Controlled lowering independent of engine speed.



**Clark Original Parts  
You bought the original  
Keep it that way!**



- We don't just build forklifts. As a company, we are also focused on providing our customers with the best possible technical service support and aftermarket parts available.

- The **CLARK PartsPRO® System** is our industry-leading electronic parts and service documentation tool that provides dealers with a quick and accurate method of identifying parts for every CLARK forklift build since 1961. Parts Pro® ensures the availability of the most current technical information and has the unique capability to create parts manuals specific to your mixed

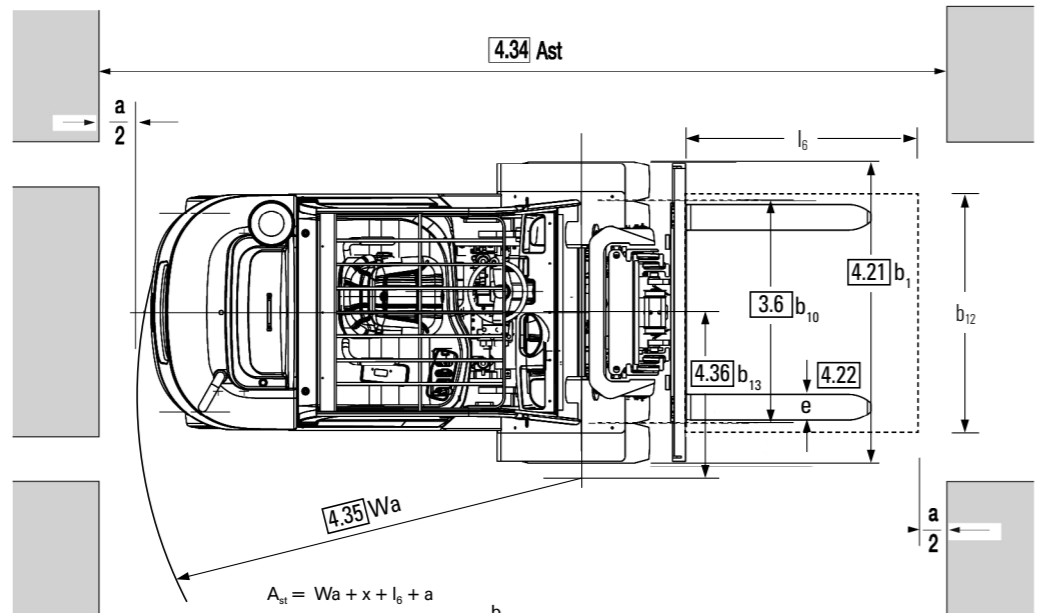
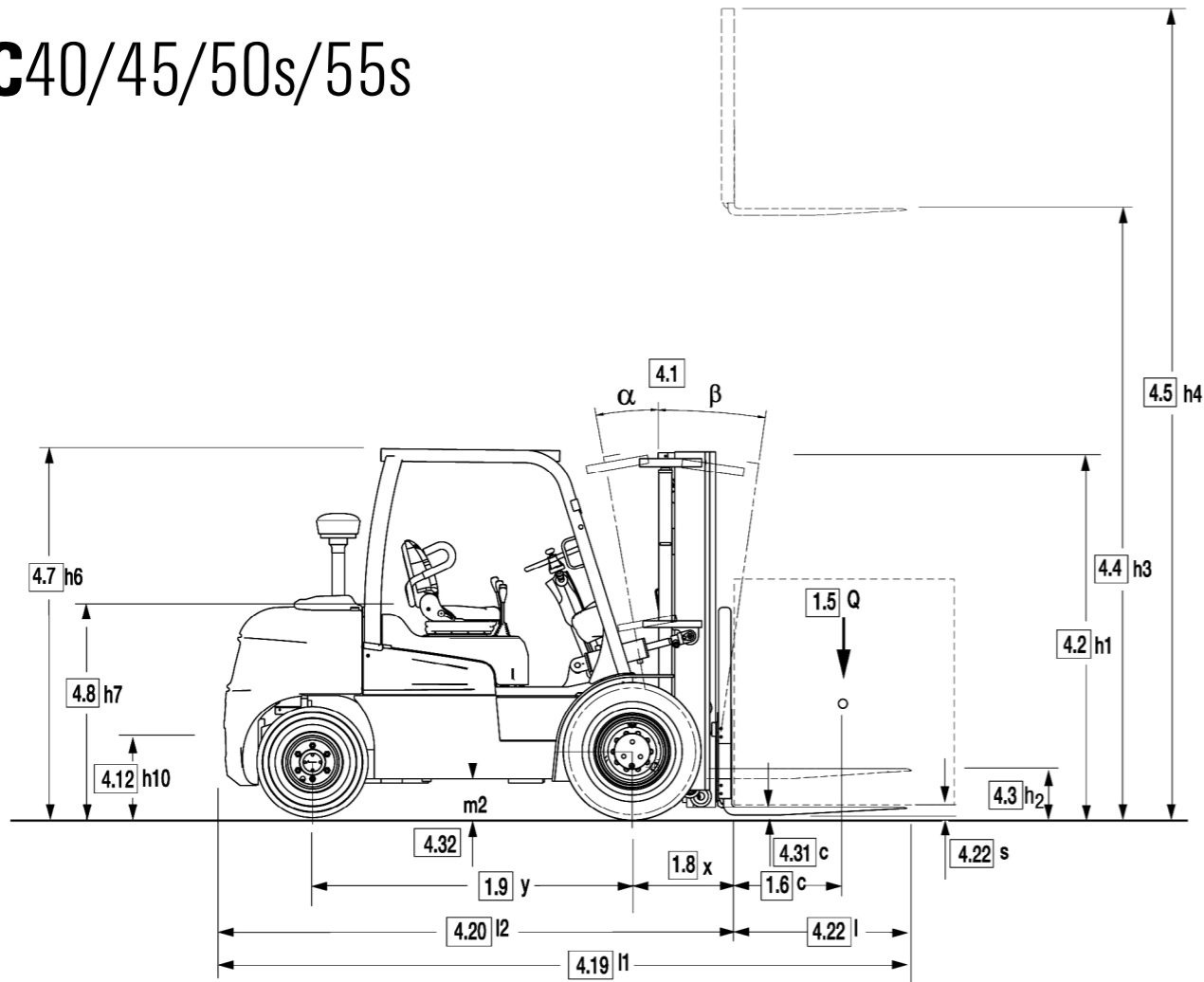
to positively identify and order the correct part(s) from your local CLARK dealer. The right CLARK part - The First Time, Every Time.

- Even though our business starts with a quality, cost effective product, our organization understands that it is the support and service that help keep your business running at peak efficiency.

**CLARK**  
**THE FORKLIFT**

# DIMENSIONS

## C40/45/50s/55s



$$A_{it} = Wa + x + l_6 + a$$

gilt nur bei / applies only if  $\frac{b_{12}}{2} < b_{13}$

$$A_{it} = Wa + \sqrt{(l_6 + x)^2 + \left(\frac{b_{12}}{2} - b_{13}\right)^2} + a$$

gilt nur bei / applies only if  $\frac{b_{12}}{2} \geq b_{13}$

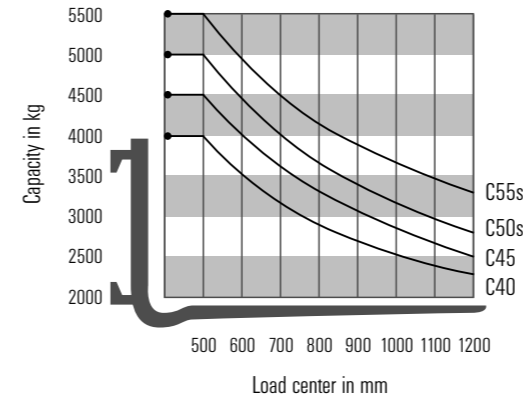
a = 200

For corresponding data see Specification Chart.

# GENERAL DATA

## Truck Capacities

Capacity at different load centres



Note:

The listed capacities are valid only for the standard upright in vertical position with standard fork carriage and standard forks, up to max. lifting height of 3300 mm. The centre of gravity of the load may be displaced by max. 100 mm against the longitudinal centre plane of the truck. Load centre is determined from top and front face of the forks. The values are based on a 1000 mm cube load configuration with the centre of gravity at the true centre of the cube. With upright tilted forward lower capacity values are valid. Attachments, longer forks, exceptional load dimensions and higher lifting heights can reduce the capacity. Please talk to your CLARK dealer if you require further information.

## Upright table C40/45

Mast type	Maximum Fork Height (h3)	Mast Lowered (h1)*	Mast Extended (h4)		Free Lift (h2)	
			with load backrest	without load backrest	with load backrest*	without load backrest*
	mm	mm	mm	mm	mm	mm
Standard	2500	1984/1957	3752	3269	156	156
	2700	2085/2057	3952	3469		
	3000	2234/2207	4252	3769		
	3300	2384/2357	4552	4069		
	3500	2484/2457	4752	4269		
	3700	2584/2557	4952	4469		
	4000	2734/2707	5252	4769		
Triple	2450	1599/1572	3702	3219	379/352	862/835
	3700	2016/1989	4952	4469	796/769	1279/1252
	4000	2116/2089	5252	4769	896/869	1379/1352
	4300	2216/2189	5552	5069	996/969	1479/1452
	4500	2283/2256	5752	5269	1063/1036	1546/1519
	4800	2383/2356	6052	5569	1163/1136	1646/1619
	5000	2450/2423	6252	5769	1230/1203	1713/1686
HI-LO	2700	2133/2106	3951	3468	913/886	1396/1369
	3000	2283/2256	4251	3768	1063/1036	1546/1519
	3300	2433/2406	4551	4068	1213/1186	1696/1669

\* Single / Dual Tyre

## Upright table C50s

Mast type	Maximum Fork Height (h3)	Mast Lowered (h1)*	Mast Extended (h4)		Free Lift (h2)	
			with load backrest	without load backrest	with load backrest*	without load backrest*
	mm	mm	mm	mm	mm	mm
Standard	2500	1992/1957	3752	3269	156	156
	2700	2092/2057	3952	3469		
	3000	2242/2207	4252	3769		
	3300	2392/2357	4552	4069		
	3500	2492/2457	4752	4269		
	3700	2592/2557	4952	4469		
	4000	2742/2707	5252	4769		
Triple	2450	1607/1571	3702	3219	387/352	870/835
	3700	2024/1988	4952	4469	804/769	1287/1252
	4000	2124/2088	5252	4769	904/869	1387/1352
	4300	2224/2188	5552	5069	1004/969	1487/1452
	4500	2291/2255	5752	5269	1071/1036	1554/1519
	4800	2391/2355	6052	5569	1171/1136	1654/1619
	5000	2458/2423	6252	5769	1238/1203	1721/1686
HI-LO	2700	2141/2106	3951	3468	921/886	1404/1369
	3000	2291/2255	4251	3768	1071/1036	1554/1519
	3300	2441/2406	4551	4068	1221/1186	1704/1669

\* Single / Dual Tyre

Performance may vary +5% and -10% due to motor and system efficiency tolerance. The performance shown represents nominal values which may be obtained under typical operating conditions of a machine. CLARK products and specifications are subject to change without notice.

## Upright table C55s

Mast type	Maximum Fork Height (h3)	Mast Lowered (h1)*	Mast Extended (h4)		Free Lift (h2)	
			with load backrest	without load backrest	with load backrest*	without load backrest*
	mm	mm	mm	mm	mm	mm
Standard	2300	1992/1956	3552	3252	166	166
	2500	2092/2056	3752	3452		
	2800	2242/2206	4052	3752		
	3100	2392/2356	4352	4052		
	3300	2492/2456	4552	4252		
	3500	2592/2556	4752	4452		
	3800	2742/2706	5052	4752		
Triple	2250	1607/1571	3502	3202	397/361	687/651
	3500	2024/1988	4752	4452	814/778	1104/1068
	3800	2124/2088	5052	4752	914/878	1204/1168
	4100	2224/2188	5352	5052	1014/978	1304/1268
	4300	2291/2255	5552	5252	1081/1045	1371/1335
	4600	2391/2355	5852	5552	1181/1145	1471/1435
	4800	2458/2422	6052	5752	1248/1212	1538/1502
HI-LO	2600	2141/2105	3861	3561	931/895	1221/1185
	2900	2291/2255	4161	3861	1081/1045	1371/1335
	3200	2441/2405	4461	4161	1231/1195	1521/1485

\* Single / Dual Tyre

# SPECIFICATIONS

## Product Specifications acc. to VDI 2198

1.1 Manufacturer (Abbreviation)		CLARK	CLARK	CLARK	CLARK		
Specifications	1.2 Manufacturer's designation	C40D	C45D	C50sD	C55sD		
	1.3 Drive unit Diesel, L.P. Gas	Diesel	Diesel	Diesel	Diesel		
	1.4 Operator type stand on / driver seated	Driver seated	Driver seated	Driver seated	Driver seated		
	1.5 Load capacity / rated load	Q (Kg)	4000	4500	5000	5500	
	1.6 Load centre distance	c (mm)	500	500	500	500	
	1.8 Load centre distance, centre of drive axle to fork face	x (mm)	573	573	573	598	
	1.9 Wheelbase	y (mm)	1950	1950	2100	2100	
	Weight	2.1 Service weight *5	kg	6021(6201)	6395(6567)	7033(7164)	7504(7628)
		2.2 Axle loading, laden front / rear *5	kg	9088/933(9273/927)	9878/1017(10055/1011)	10937/1096(11076/1088)	11680/1324(11811/1317)
2.3 Axle loading, unladen front / rear *5		kg	2682/3339(2867/3334)	2671/3723(2848/3718)	3085/3948(3224/3940)	3030/4474(3162/4466)	
Tires, Chassis	3.1 Tyre type, P = pneumatic, SE = superelastic, C = cushion *1		P	P	P	P	
	3.2 Tyre size, front *5		8.25X15-14PR (7.50X15-12PR)	8.25X15-16PR (7.50X15-12PR)	300X15-18PR (7.50X15-12PR)	300X15-20PR (7.50X15-12PR)	
	3.3 Tyre size, rear		7.00X12-14PR	7.00X12-14PR	7.00X12-14PR	7.00X12-14PR	
	3.5 Wheels, number front/rear (x = drive wheels) *5		2(4)/2	2(4)/2	2(4)/2	2(4)/2	
	3.6 Tread, front *5	b10 (mm)	1165(1288)	1165(1288)	1112(1288)	1112(1288)	
	3.7 Tread, rear	b11 (mm)	1134	1134	1134	1134	
	Dimensions	4.1 Tilt of upright/fork carriage, α / β	Grad	10/8	10/8	10/8	10/8
4.2 Height, upright lowered *5		h1 (mm)	2384(2357)	2384(2357)	2384(2357)	2492 (2456)	
4.3 Freelift		h2 (mm)	156	156	156	166	
4.4 Lift height *2		h3 (mm)	3300	3300	3300	3300	
4.5 Height, upright extended (with LBR)		h4 (mm)	4552	4552	4552	4552	
4.7 Height overheadguard Std /cabin *5		h6 (mm)	2324/2371 (2310/2357)	2324/2371 (2310/2357)	2324/2371 (2310/2357)	2324/2371 (2310/2357)	
4.8 Seat height		h7 (mm)	1265	1265	1265	1265	
4.12 Coupling height		h10 (mm)	460	460	460	460	
4.19 Overall length		l1 (mm)	4113	4163	4453	4533	
4.20 Length to face of forks		l2 (mm)	3043	3093	3233	3313	
4.21 Width *5		b1 . b2 (mm)	1400(1742)	1400(1742)	1400(1742)	1400(1742)	
4.22 Fork dimensions		s • e • l (mm)	50x122x1067	50x122x1067	50x150x1219	60x150x1219	
4.23 Fork carriage DIN 15173, A, B			Class III A	Class III A	Class III A	Class IV A	
4.24 Fork carriage width *5		b3 (mm)	1348 (1678)	1348 (1678)	1348(1678)	1348(1678)	
4.31 Ground clearance minimum *5		m1 (mm)	169(142)	169(142)	177(141)	177(141)	
4.32 Ground clearance centre of wheelbase *5		m2 (mm)	212(186)	212(186)	221(185)	221(185)	
4.33 Aisle width for pallets (I6-b12) 1000 x 1200 crossways	Ast (mm)	4616	4651	4805	4869		
4.34 Aisle width for pallets (I6-b12) 800 x 1200 lengthways	Ast (mm)	4816	4851	5005	5069		
4.35 Outside turning radius	Wa (mm)	2843	2878	3032	3071		
4.36 Smallest pivot point distance *5	b13 (mm)	980(981)	980(981)	1020(1021)	1020(1021)		
Performance	5.1 Travel speed laden/unladen *5	km/h	25.0/26.0(24.3/25.5)	24.8/26.0(24.2/25.0)	24.9/26.9(24.0/25.5)	24.7/ 26.9(23.9/25.5)	
	5.2 Lift speed laden/unladen	m/s	0.52/0.56	0.51/0.56	0.50/0.56	0.49/0.56	
	5.3 Lowering speed laden/unladen	m/s	0.50/0.47	0.50/0.47	0.50/0.47	0.50/0.47	
	5.6 Max. drawbar pull laden/unladen *3 *5	N	41384/12729 (44532/13651)	43551/12611 (44620/13494)	43120/14779 (44699/15485)	43316/14367 (44709/15034)	
	5.8 Max. gradeability laden/unladen *3 *5	%	52.2/21.4 (52.8/22.2)	47.1/20.1 (47.5/20.9)	41.1/21.3 (42.3/21.8)	37.7/19.6 (38.7/20.1)	
	5.9 Acceleration time laden/unladen (0 - 15 m)	s	-	-	-	-	
	5.10 Service brake		Wet disc brake	Wet disc brake	Wet disc brake	Wet disc brake	
	Drive line	7.1 Manufacturer / Type *6		Kubota V3800T	Kubota V3800T	Kubota V3800T	Kubota V3800T
		7.2 Rated output acc. To ISO 1585	kW	68.6	68.6	68.6	68.6
		7.3 Rated speed	min-1	2400	2400	2400	2400
7.4 No. of cylinders / displacement		/cm <sup>3</sup>	4/3769	4/3769	4/3769	4/3769	
7.5 Fuel consumption acc. VDI-Cyclus		Diesel = l/h. Gas = kg/h	-	-	-	-	
Miscellaneous	8.2 Operating pressure for attachments	bar	140	140	140	140	
	8.3 Oil volume for attachments	l/min	-	-	-	-	
	8.4 Sound level, driver's ear *4	dB (A)	83	83	83	83	
	8.5 Towing coupling, class/type DIN		-	-	-	-	

1) Optional with super-elastic tyres \*2Futher lift heights see upright table \*3 with 1.6 km/h Without load at friction coefficient  $\mu=0.8$  \*4 Equivalent permanent sound-pressure level L pAeq, T in accordance with DIN EN 12053 (previously DIN 45635-36) \*5 Values for Dual Tyre \*6 Diesel = Tier3 / LPG= Tier0

All values shown are for standard lift truck with standard equipment. If the truck is supplied with options, values may change. All values given may vary +5% and -10% due to the motor and system tolerances and represent nominal values obtained under typical operating conditions. Specifications for Non-emission limited truck.

## Product Specifications acc. to VDI 2198

1.1 Manufacturer (Abbreviation)		CLARK	CLARK	CLARK	CLARK		
Specifications	1.2 Manufacturer's designation	C40L	C45L	C50sL	C55sL		
	1.3 Drive unit Diesel, L.P. Gas	L.P. Gas	L.P. Gas	L.P. Gas	L.P. Gas		
	1.4 Operator type stand on / driver seated	Driver seated	Driver seated	Driver seated	Driver seated		
	1.5 Load capacity / rated load	Q (Kg)	4000	4500	5000	5500	
	1.6 Load centre distance	c (mm)	500	500	500	500	
	1.8 Load centre distance, centre of drive axle to fork face	x (mm)	573	573	573	598	
	1.9 Wheelbase	y (mm)	1950	1950	2100	2100	
	Weight	2.1 Service weight *5	kg	5868(6048)	6242(6414)	6880(7012)	7351(7476)
		2.2 Axle loading, laden front / rear *5	kg	8995/873(9180/868)	9785/957(9962/952)	10840/1040(10980/1032)	11581/1270(11714/1262)
2.3 Axle loading, unladen front / rear *5		kg	2589/3279(2774/3274)	2578/3664(2755/3659)	2988/3892(3127/3885)	2932/4419(3064/4412)	
Tires, Chassis	3.1 Tyre type, P = pneumatic, SE = superelastic, C = cushion *1		P	P	P	P	
	3.2 Tyre size, front *5		8.25X15-14PR (7.50X15-12PR)	8.25X15-16PR (7.50X15-12PR)	300X15-18PR (7.50X15-12PR)	300X15-20PR (7.50X15-12PR)	
	3.3 Tyre size, rear		7.00X12-14PR	7.00X12-14PR	7.00X12-14PR	7.00X12-14PR	
	3.5 Wheels, number front/rear (x = drive wheels) *5		2x(4x)/2	2x(4x)/2	2x(4x)/2	2x(4x)/2	
	3.6 Tread, front *5	b10 (mm)	1165(1288)	1165(1288)	1112(1288)	1112(1288)	
	3.7 Tread, rear	b11 (mm)	1134	1134	1134	1134	
	Dimensions	4.1 Tilt of upright/fork carriage, α / β	Grad	10/8	10/8	10/8	10/8
4.2 Height, upright lowered *5		h1 (mm)	2384(2357)	2384(2357)	2384(2357)	2492 (2456)	
4.3 Freelift		h2 (mm)	156	156	156	166	
4.4 Lift height *2		h3 (mm)	3300	3300	3300	3300	
4.5 Height, upright extended (with LBR)		h4 (mm)	4552	4552	4552	4552	
4.7 Height overheadguard Std /cabin *5		h6 (mm)	2324/2371 (2310/2357)	2324/2371 (2310/2357)	2324/2371 (2310/2357)	2324/2371 (2310/2357)	
4.8 Seat height		h7 (mm)	1265	1265	1265	1265	
4.12 Coupling height		h10 (mm)	460	460	460	460	
4.19 Overall length		l1 (mm)	4113	4163	4453	4533	
4.20 Length to face of forks		l2 (mm)	3043	3093	3233	3313	
4.21 Width *5		b1 . b2 (mm)	1400(1742)	1400(1742)	1400(1742)	1400(1742)	
4.22 Fork dimensions		s • e • l (mm)	50x122x1067	50x122x1067	50x150x1219	60x150x1219	
4.23 Fork carriage DIN 15173, A, B			Class III A	Class III A	Class III A	Class IV A	
4.24 Fork carriage width *5		b3 (mm)	1348(1678)	1348(1678)	1348(1678)	1348(1678)	
4.31 Ground clearance minimum *5		m1 (mm)	169(142)	169(142)	177(141)	177(141)	
4.32 Ground clearance centre of wheelbase *5		m2 (mm)	212(186)	212(186)	221(185)	221(185)	
4.33 Aisle width for pallets (I6-b12) 1000 x 1200 crossways	Ast (mm)	4616	4651	4805	4869		
4.34 Aisle width for pallets (I6-b12) 800 x 1200 lengthways	Ast (mm)	4816	4851	5005	5069		
4.35 Outside turning radius	Wa (mm)	2843	2878	3032	3071		
4.36 Smallest pivot point distance *5	b13 (mm)	980(981)	980(981)	1020(1021)	1020(1021)		
Performance	5.1 Travel speed laden/unladen *5	km/h	23.3/21.8(21.9/20.9)	23.4/21.9(21.8/20.7)	23.6/21.7(21.7/20.5)	23.6/21.6(21.8/20.4)	
	5.2 Lift speed laden/unladen	m/s	0.47/0.53	0.46/0.53	0.45/0.53	0.44/0.53	
	5.3 Lowering speed laden/unladen	m/s	0.50/0.47	0.50/0.47	0.50/0.47	0.50/0.47	
	5.6 Max. drawbar pull laden/unladen *3 *5	N	31381/12268 (33146/13200)	31479/12111 (33166/13043)	31107/14298 (33186/15004)	31195/13876 (33146/14543)	
	5.8 Max. gradeability laden/unladen *3 *5	%	36.2/21.1(37.7/22.1)	39.2/19.8(34.2/20.7)	28.9/21.0(30.7/21.8)	26.6/19.3(28.1/20.0)	
	5.9 Acceleration time laden/unladen (0 - 15 m)	s	-	-	-	-	
	5.10 Service brake		Wet disc brake	Wet disc brake	Wet disc brake	Wet disc brake	
	Drive line	7.1 Manufacturer / Type *6		GM V6 4.3	GM V6 4.3	GM V6 4.3	GM V6 4.3
		7.2 Rated output acc. To ISO 1585	kW	66,3	66,3	66,3	66,3
		7.3 Rated speed	min-1	2400	2400	2400	2400
7.4 No. of cylinders / displacement		/cm <sup>3</sup>	6/4300	6/4300	6/4300	6/4300	
7.5 Fuel consumption acc. VDI-Cyclus		Diesel = l/h. Gas = kg/h	-	-	-	-	
Miscellaneous	8.2 Operating pressure for attachments	bar	140	140	140	140	
	8.3 Oil volume for attachments	l/min	-	-	-	-	
	8.4 Sound level, driver's ear *4	dB (A)	87	87	87	87	
	8.5 Towing coupling, class/type DIN		-	-	-	-	

1) Optional with super-elastic tyres \*2Futher lift heights see upright table \*3 with 1.6 km/h Without load at friction coefficient  $\mu=0.8$  \*4 Equivalent permanent sound-pressure level L pAeq, T in accordance with DIN EN 12053 (previously DIN 45635-36) \*5 Values for Dual Tyre \*6 Diesel = Tier3 / LPG= Tier0

All values shown are for standard lift truck with standard equipment. If the truck is supplied with options, values may change. All values given may vary +5% and -10% due to the motor and system tolerances and represent nominal values obtained under typical operating conditions. Specifications for Non-emission limited truck.

**BUILT TO LAST.**



**CLARK**  
THE FORKLIFT

**CLARK INTERNATIONAL SOUTH PACIFIC**  
30 Salisbury Rd Hornsby NSW Australia 2077  
PO Box 50 Hornsby NSW Australia 1630  
T +61 9477 8444 F +61 9476 6558  
cisp@clarkisp.com.au [www.clarkisp.com.au](http://www.clarkisp.com.au)

**C40 - 55S**

© 2008 CLARK Material Handling Company