



THE FORKLIFT

COP1

Elevating Work Platform Buddy



www.clarkisp.com

COP1

ELEVATING WORK PLATFORM BUDDY

INVENTORY WORK OR COLLECTING ORDERS



REPAIR OR MAINTENANCE WORK



TRANSPORT OF SMALL PARTS



The ideal solution for almost any application area

Whether for repair and maintenance work indoors on level floors or for lifting small parts to a gallery, the COP1 is the ideal helper.

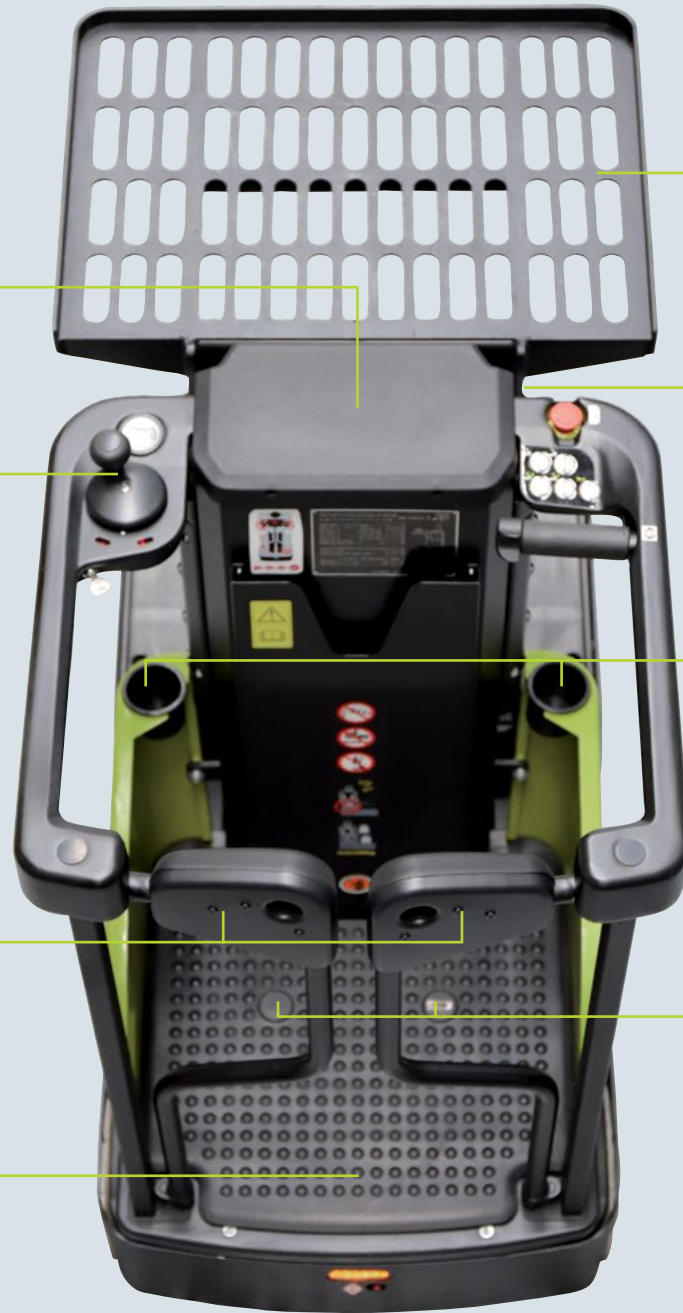
The vehicle is not only suitable for classic collection of orders, but also proves itself in filling shelves, conducting inventory re-stocking, decorating rooms, mounting signs or boards, replacing lamps or completing cleaning and repair work.



Maintenance-free lithium-ion batteries with 120Ah are fitted as standard in the COP1. You can achieve even better availability and a more favourable charge factor which additionally offers the possibility of interim charging.

COP1

ELEVATING WORK PLATFORM BUDDY



Padded support

The ergonomic steering controls

Ensures intuitive and precise operation.

Safety monitoring

It is only possible to raise the working platform when the safety bars are locked. The padded door bar also serves as a backrest.

Sturdy, anti-slip rubber flooring in the footwell

Height-adjustable shelf with longitudinal slots, so that the operator always has a good downward view.

Safety sensor under the working platform
So that accidents are prevented when lowering the working platform.

Two cup holders and a storage compartment for documents make everyday work easier for the operator.

Dead man switches in the footwell
The dead man switches ensure that the operator has to stand firmly on the platform. As soon as the dead man switch loses contact, the driving, lowering and lifting functions are automatically deactivated.

Technical data: BUDDY WORK ASSIST VEHICLE COP1



Load-bearing capacity
(upper shelf):
Max. 90 kg



Residual load capacity
(lower shelf):
Max. 110 kg



Lifting height:
2,990 mm



Driving speed:
Max. 6 km/h
(when lowered)



Performance
Drive motor:
0.65 kw/h



Battery power:
24 Volt 120 Ah



STANDARD SAFETY FEATURES FOR HIGH LEVEL OF SAFETY

The COP1 comes with electrically monitored safety bars, two optical hand sensors, dead man switches in the footwell, a tilting sensor and a safety sensor under the working platform to increase safety when the platform is lowered.

This flexible buddy elevating work vehicle can only be started once the operator is standing on the working platform and the safety bars have been closed. When the working platform is lifted, the safety bars lock automatically. Safety sensors below the operator platform deactivate the driving, lowering and lifting functions when pressure is applied to the cover below the working platform.

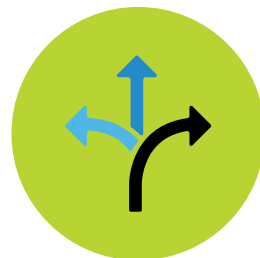
The optical sensors ensure that the operator keeps both hands on the controls while driving and lifting and remains within the machine whilst in operation. The dead man switches ensure that the operator has to stand firmly on the platform. As soon as a dead man switch loses contact, the driving, lowering and lifting functions are automatically deactivated.

From working in low light working areas or as a warning to oncoming traffic, the vehicle has an integrated LED light in the front of the vehicle.

The emergency stop on the outside of the chassis and the hydraulic emergency lowering complete the safety package.

Height-adjustable shelf –
adjustment range: 485 mm





SAFETY

The CLARK COP1 is packed with features to ensure safe operation throughout the working day.

- Automatically closing safety bars when entering or leaving the working platform
- The working platform can only be lifted with the safety bars closed
- Safe two-handed operation so that the driver remains within the machine when the vehicle is moving
- The ergonomic steering knob provides intuitive and precise operation of the vehicle
- Safe use in low-light working areas and warning for oncoming traffic thanks to the integrated LED light
- The stable mast ensures a high level of safety even when extended
- The robust steel frame protects the vehicle from damage
- Externally operated emergency shut-down and hydraulic emergency lowering
- Standard slack chain monitoring, increases safety in everyday work

COST REDUCTION

The COP1 is extremely efficient for picking goods due to the elevated platform that can be elevated while in motion. It proves its worth as a rolling ladder or operating platform.

Compared to a conventional rolling ladder, the COP1 not only saves time by eliminating the need to climb up and down, but the risk of an accident or damage to the goods is also lowered.

Cost savings due to the battery and charging technology

- Maintenance-free 120Ah lithium-ion battery
- The charger cable is integrated in the vehicle
- Internal charger can be connected to a standard 240 Volt power socket
- Neither charging rooms nor ventilation systems are required, as the charging process generates no gases.

FLEXIBILITY

The COP1's manoeuvrability allows it to work in confined areas with ease. Its ability to turn on the spot improves accessibility across any flat working area.

The COP1 can also be tailored to suit your application:

Adaptable driving

The braking behaviour, acceleration and regenerative braking of the machine can be adapted to suit your operation.

Height-adjustable shelf

The height-adjustable shelf has an adjustment range of 485mm which allows goods of varying sizes to be picked.

Opportunity Charging with Lithium-Ion battery

Powerful lithium-ion technology results in a long lasting and maintenance free battery that can be rapidly charged during breaks throughout the day ensuring higher uptimes. Small parts can be safely stowed away in the standard storage compartments

COP1

ELEVATING WORK PLATFORM BUDDY



Fast and Safe Work

The COP1 buddy elevating work vehicle is extremely efficient for picking goods due to the elevated platform that can be elevated while in motion. It proves its worth as a rolling ladder or operating platform.

The COP1 is the ideal helper in wholesale, retail, distribution and the food and beverage industry.

The COP1 is perfect for use in offices, hotels, museums, hospitals or in trade show preparation.

The working platform can be used to fill shelves, check inventory, mount signs, replace lamps or complete cleaning and repair work.

- Picking at reach heights of up to 5m
- Travel speed of up to 6km/h (when lowered)
- With a total width of only 750mm and a turning radius of only 1,260mm, the vehicle is easy to manoeuvre in narrow aisles or confined working areas including most standard doors.
- When the working platform is lifted, the safety bars lock automatically.

Highlights



1

STABILITY

Thanks to the five-point chassis, which comprises of a combination of drive wheel, two support rollers and two load edges, gives the COP1 strong stability and stable driving characteristics.



2

SIMULTANEOUS DRIVING AND LIFTING/LOWERING

Easy-to-reach switches allow safe and productive works. The maximum speed is automatically adjusted at different lifting heights.



3

INTUITIVE AND SAFE OPERATION

The ergonomic steering control ensures intuitive and precise operation of the vehicle. Small parts can be safely stowed away in the standard storage compartments. Two cup holders and a storage compartment for documents make everyday work easier for the operator.

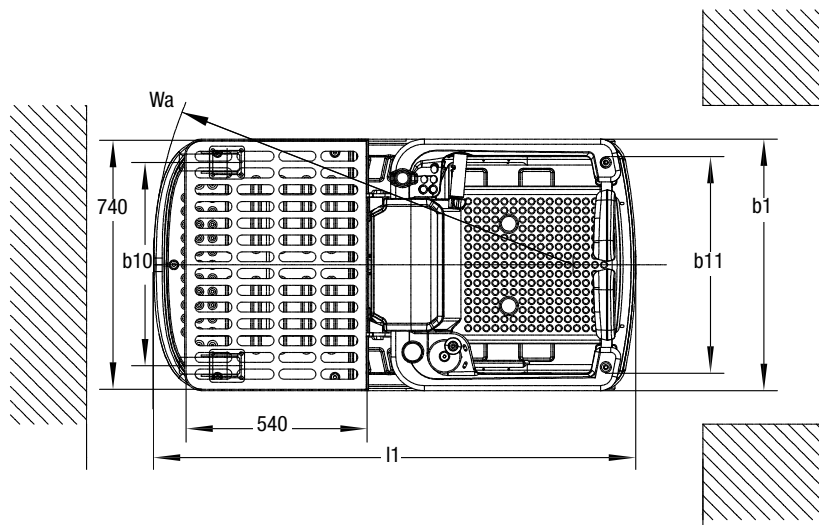
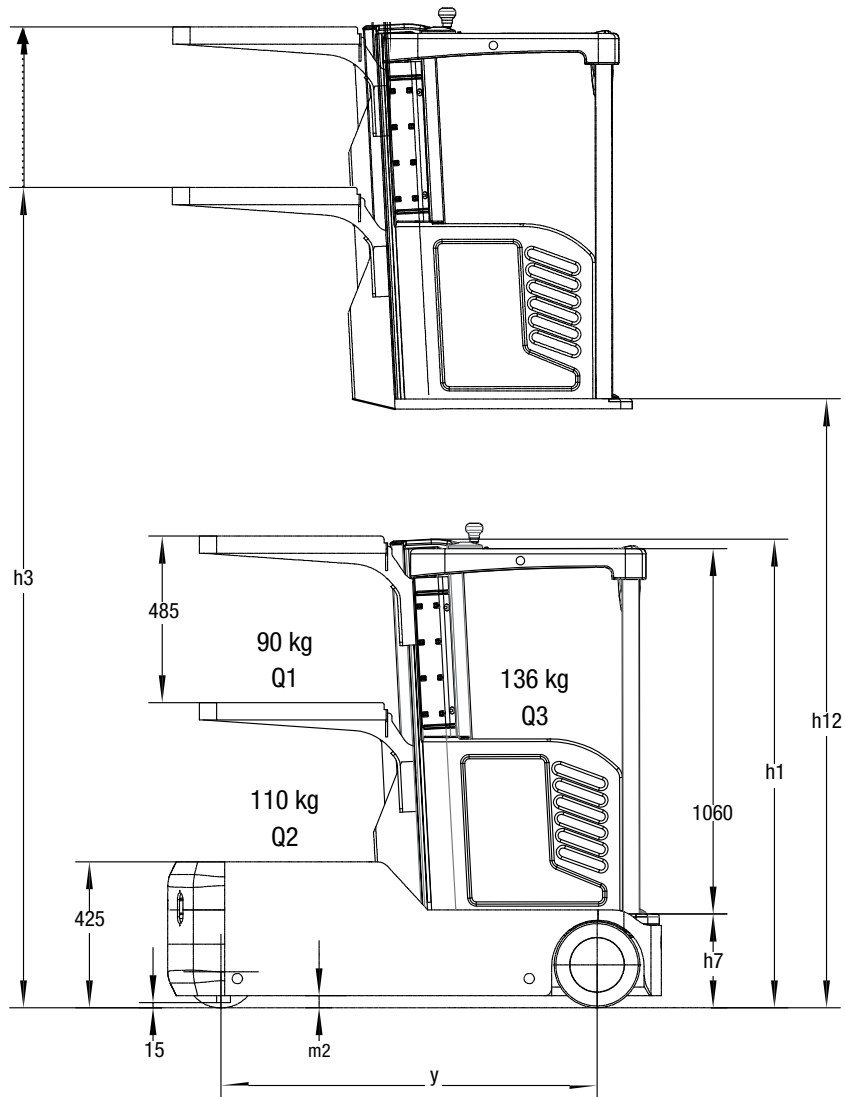


4

SAFETY SENSORS

The COP1 comes with standard safety features, such as electrically monitored safety bars, two optical hand sensors, a dead man's switch in the footwell, a tilting sensor and a safety sensor under the working platform to increase safety when the vehicle is lowered.

DIMENSIONS



SPECIFICATIONS

Product Specification acc. to VDI 2198

| 1.1 Manufacturer (Abbreviation) | | CLARK | | |
|---------------------------------|---|--|---------------|---------------|
| Specifications | 1.2 Manufacturer's designation | COP1 | | |
| | 1.3 Drive | 24V Electric | | |
| | 1.4 Operator type | Buddy Work Assist Vehicle | | |
| | 1.5 Rated capacity/rated load | Q 1 (kg) | 90 | |
| | | Q 2 (kg) | 110 | |
| Q 3 (kg) | | 136 | | |
| 1.9 Wheelbase | y (mm) | 1095 | | |
| Weight | 2.1 Service weight incl. battery (see 6.5) | kg | 800 | |
| | 2.3 Axle loading, unladen driving side/ loading side | kg | 370 / 430 | |
| Tyres, Chassis | 3.1 Tyres type, driving wheels / loading wheels | Polyurethane / Rubber | | |
| | 3.2 Tyre size, driving wheel (Diameter x Width) | mm | Ø 210 x 70 | |
| | 3.3 Tyre size, loading wheel (Diameter x Width) | mm | Ø 250 x 100 | |
| | 3.5 Wheels, number front/rear (x = driven wheels) | 1 x 2 / 2 | | |
| | 3.6 Track width, front, driving side | b10 (mm) | 545 | |
| | 3.7 Track width, rear, loading side | b11 (mm) | 640 | |
| Dimensions | 4.2 Height, lowered | h1 (mm) | 1365 | |
| | 4.4 Lifting height of the upper loading platform, lowered | h3 (mm) | 3620 | |
| | | Lifting height of the upper loading platform, lifted | h3 (mm) | 4105 |
| | 4.8 Standing height, driver's cab lowered | h7 (mm) | 275 | |
| | 4.14 Standing height, driver's cab extended | h12 (mm) | 2990 | |
| | 4.19 Overall length | l1 (mm) | 1440 | |
| | 4.21 Overall width | b1 (mm) | 750 | |
| | 4.32 Ground clearance, centre of wheelbase | m2 (mm) | 35 | |
| | 4.35 Turning radius | Wa (mm) | 1260 | |
| 4.38 Picking height | (mm) | 4600 | | |
| | Reach height | (mm) | 5000 | |
| Performance | 5.1 Travel speed, laden/ unladen (H: 0-150mm) | km/ h | 6 | |
| | | Travel speed, laden/ unladen (H: 150-400mm) | km/ h | 3 |
| | | Travel speed, laden/ unladen (H: 400-800mm) | km/ h | 2 |
| | | Travel speed, laden/ unladen (H: 800-2990mm) | km/ h | 1 |
| | 5.2 Lifting speed, laden/ unladen (Q3) | m/ s | 0.213 / 0.225 | |
| | | Lifting speed, laden/ unladen (Q1) | m/ s | 0.023 / 0.028 |
| | 5.3 Lowering speed, laden/ unladen (Q3) | m/ s | 0.230 / 0.233 | |
| | | Lowering speed, laden/ unladen (Q1) | m/ s | 0.030 / 0.029 |
| | 5.8 Max. gradeability, laden/ unladen | % | 5 / 5 | |
| | 5.10 Service brake type | Electronic | | |
| Electrics | 6.1 Drive motor rating S2 60 min | kW | 0.65 | |
| | 6.2 Lift motor rating at S3 15% | kW | 2.2 | |
| | 6.4 Battery voltage/ nominal K5 | V/ Ah | 24V / 120 Ah | |
| | 6.5 Battery weight | kg | 35 | |
| Misc. | 8.1 Type of drive unit | kWh/h | DC | |
| | 10.5 Steering type | Electronic | | |
| | 10.7 Sound pressure level at the driver's seat acc. to EN 12053 | dB(A) | 74 | |

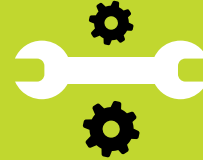
*1) At friction coefficient $\mu=0.6$ with 1.6 km/h

All values shown are for standard lift truck with standard equipment. If the truck is supplied with options, values may change. All values given may vary + 5 % and - 10 % due the motor and system tolerances and represent nominal values obtained under typical operating conditions.



GLOBAL PRESENCE

CLARK products are in operation all around the world. An estimated 350,000 units in operation currently!



RELIABLE SPARE PARTS SERVICE

CLARK has state of the art distribution warehouses in USA, South Korea, Brazil, China, Australia, Germany and Vietnam.



COMPREHENSIVE DEALER NETWORK

Over 550 sales & distribution partners in more than 90 countries ensure a high level of availability of our products and services.



EXCELLENT QUALITY

CLARK is the forerunner in high quality standards and innovative product developments.